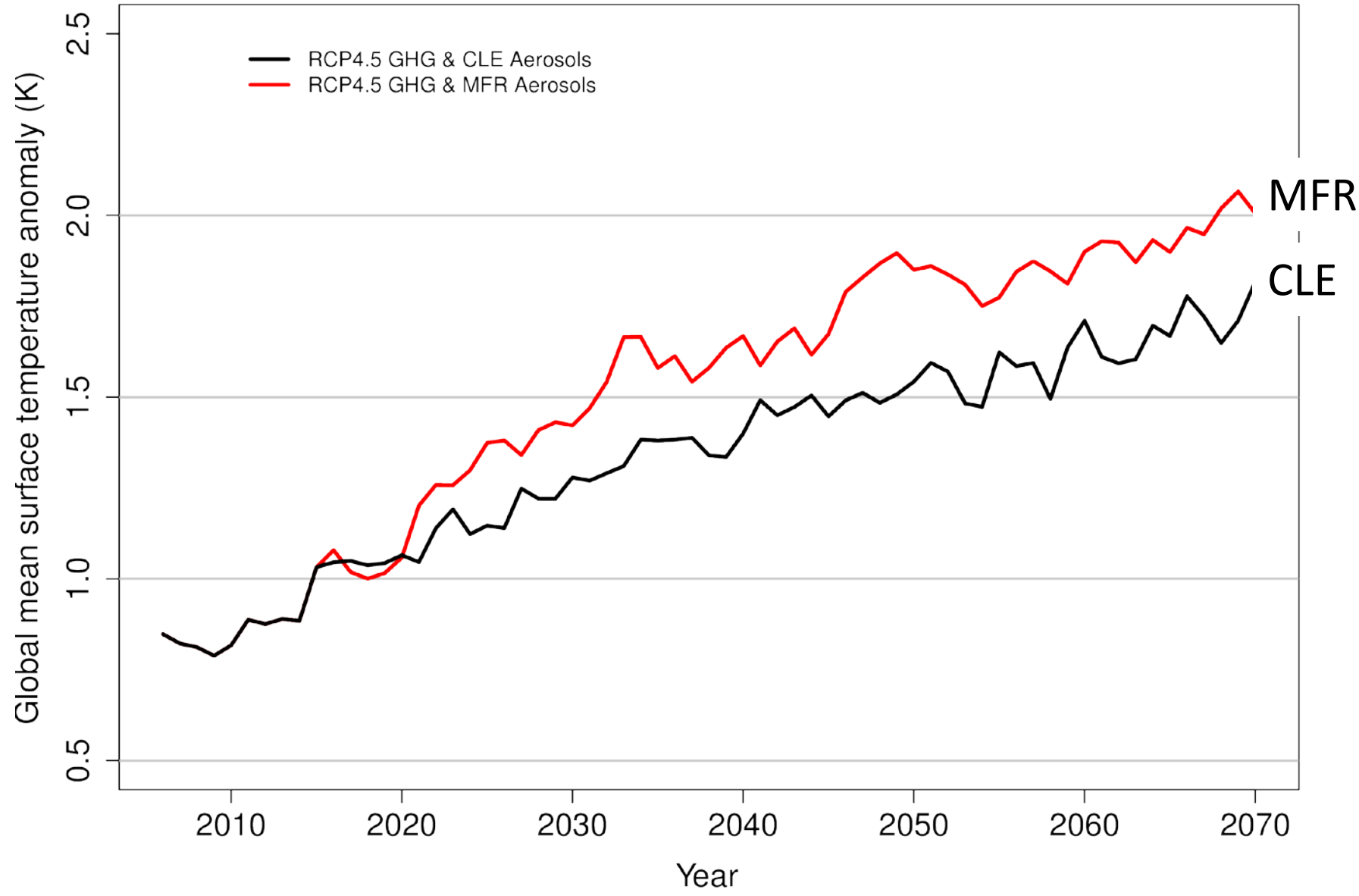


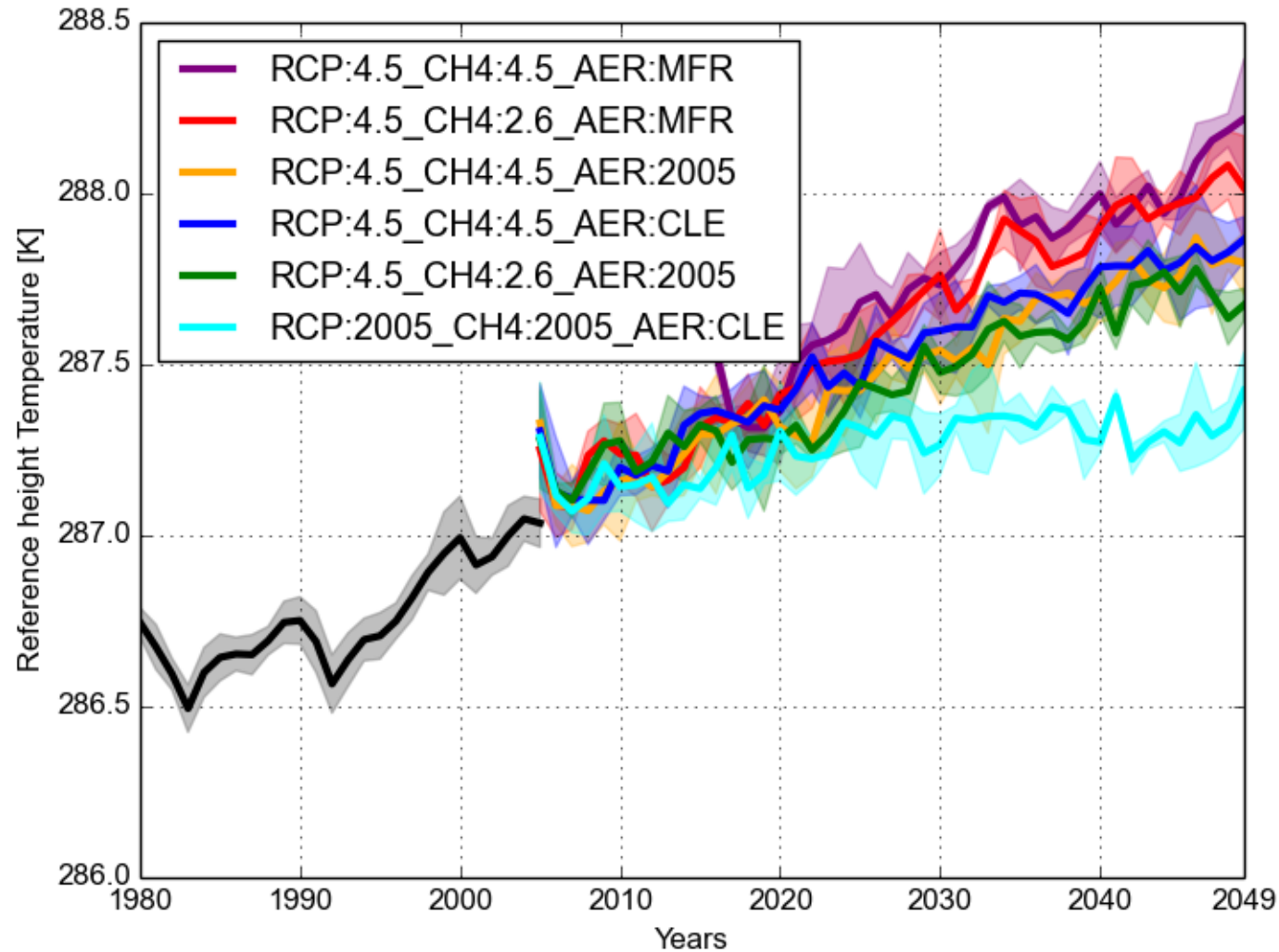
Questions

- How does mid-latitude SLCF forcing trigger the amplified warming in the Arctic?
- Have mid-latitude SLCF forcing also affected precipitation? How?
- How can we constrain the (indirect) aerosol climate effect and reduce the uncertainty in anthropogenic aerosol forcing?
- What message can we give policy makers...?
 - CH₄ and O₃: positive forcing **certain** – reduce
 - BC: ? Forcing ? – no big impact?
 - Sulfate, organic carbon, nitrate: negative forcing **certain** – but still reduce!

Influence of aerosol emissions on future climate



Influence of methane (RCP4.5 and RCP2.6) and aerosols on future climate (2005, MFR and CLE)



Effect of Methane: RCP:4.5_CH4:2.6_AER:MFR - RCP:4.5_CH4:2.6_AER:MFR

